

## Drifters

**RAY OF HOPE** (1925). 98 tons *gross*.  
Mined, Dec. 10, 1939.

**BOY ROY** (1911). 95 tons *gross*. **GIRL PAMELA** (1912). 93 tons *gross*.  
**PAXTON** (1911). 92 tons *gross*.  
All 3 lost during withdrawal operations at Dunkirk, May-June 1940.

**GIRL MARY**. 25 tons *net*. **SUMMER ROSE** (1919). 96 tons *gross*.  
Both lost through enemy action in October 1940.

**GIRL HELEN** (1934). 63 tons *gross*. **REED** (1932). 99 tons *gross*.  
Both mined in November 1940.

**XMAS ROSE** (1918). 96 tons *gross*.  
Mined in December 1940.

**HARVEST GLEANER** (1918). 96 tons *gross*.  
Lost in January 1941.

## Armed Merchant Cruisers

**RAWALPINDI** (1925). 16,697 tons *gross*.  
Sunk by gunfire of enemy capital ships, Nov. 23, 1939.

**CARINTHIA** (1925). 20,277 tons *gross*.  
Torpedoed by enemy submarine, June 8, 1940.

**VANDYCK** (1921). 13,241 tons *gross*.  
Sunk in action with enemy aircraft, Norway, June 10, 1940.

**SCOTSTOUN** (ex-*Caledonia*). (1925). 17,046 tons *gross*.  
Torpedoed by enemy submarine, June 13, 1940.

**ANDANIA** (1922). 13,950 tons *gross*.  
Torpedoed by enemy submarine, June 16, 1940.

**TRANSYLVANIA** (1925). 16,923 tons *gross*.  
Torpedoed by enemy submarine, August 1940.

**DUNVEGAN CASTLE** (1936). 15,007 tons *gross*.  
Torpedoed by enemy submarine, August 1940.

**LAURENTIC** (1927). 18,724 tons *gross*.  
Torpedoed by enemy submarine, November 1940.

**PATROCLUS** (1923). 11,314 tons *gross*.  
Torpedoed by enemy submarine, November 1940.

**JERVIS BAY**.  
Sunk by gunfire of German "pocket battleship," Nov. 5, 1940.

**FORFAR**.  
Torpedoed by enemy submarine, December 1940.

## Patrol Vessel (R. Indian Navy)



PATHAN.

1932 Photo, Official.

**PATHAN** (1918). 661 tons.  
Torpedoed by enemy submarine, June 23, 1940.

## Armed Yachts

**GRIVE** (ex-*Narcisseus*) (1905). 816 tons T.M. (F.A.A. Tender.)  
Lost during withdrawal operations at Dunkirk, May 1940.

**CAMPEADOR V** (1938). 213 tons T.M.  
Mined, June 23, 1940.

**WARRIOR II** (1904). 1,266 tons T.M.  
Sunk in action with enemy aircraft, July 1940.

**GULZAR** (1934). 201 tons T.M.  
Sunk in action with enemy aircraft, Dover, July 29, 1940.

**SAPPHO** (1935). 327 tons T.M.  
Mined, October 1940.

**BRITISH**

WAR LOSS SECTION—*continued*

**Auxiliary Minesweepers**

**BRIGHTON BELLE** (1900). 396 tons *gross*. **BRIGHTON QUEEN** (1905). 807 tons *gross*. **GRACIE FIELDS** (1936). 393 tons *gross*. **WAVERLEY** (1899). 537 tons *gross*. **CRESTED EAGLE** (1925). 1,110 tons *gross*.

All 5 lost during withdrawal operations at Dunkirk, May-June 1940.

**Fleet Tugs**

**ST. FAGAN** (1918). 820 tons.

Lost during withdrawal operations at Dunkirk, June 1, 1940.

**SAUCY** (1918). 579 tons *gross*.

Mined, October 1940.

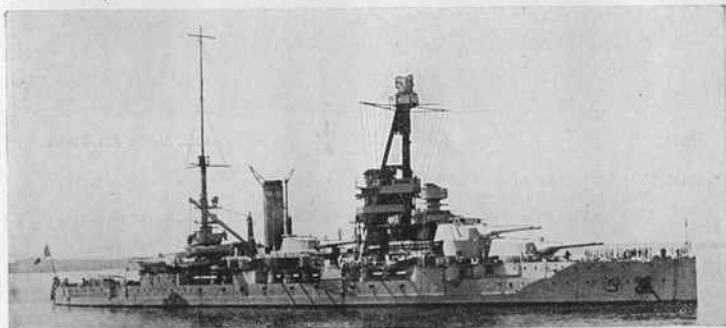
**Miscellaneous Vessels**

**PRINCESS VICTORIA** (Auxiliary Minelayer). 2,500 tons *gross*.  
Mined, May 21, 1940.

**COMFORT** (Dan-laying Vessel). 60 tons *net*. **KING ORRY** (1913). 1,877 tons *gross*. **MONA'S QUEEN** (1934). 2,756 tons *gross*. (Armed Boarding Steamers.)  
All 3 lost during withdrawal operations at Dunkirk, June 1940.

FRENCH

Battleship



BRETAGNE.

1935, *Capitaine M. Adam.*

**BRETAGNE** (1913). 22,189 tons.

Heavily damaged by British shell fire at Mers-el-Kebir, Oran, July 3, 1940, and subsequently capsized. Sister ship *Provence*, damaged on same occasion, may also prove to be a constructive total loss.

Cruiser Minelayer



LA TOUR D'AUVERGNE

1939, *H. Emery, Toulon.*

**LA TOUR D'AUVERGNE** (1929). 4,773 tons.

Destroyed by internal explosion at Casablanca, Sept. 18, 1939.

Destroyers

**MOGADOR** (1937). 2,884 tons.

Believed to have received irreparable damage from British shell fire at Oran, July 3, 1940.

**L'AUDACIEUX** (1934). 2,569 tons.

Set on fire and sunk in action with British squadron at Dakar, Sept. 23, 1940.

(A second destroyer of this type was set on fire and may also have become a total loss.)



MAILLÉ BREZÉ

1933 *Capitaine M. Adam.*

**MAILLÉ BREZÉ** (1931). 2,441 tons.

Caught fire and blew up in a British port, April 30, 1940.

**CHACAL** (1924), **JAGUAR** (1923). 2,126 tons.

Both lost during withdrawal operations at Dunkirk, May-June 1940.

**L'ADROIT** (1927). 1,378 tons.

Lost during withdrawal operations at Dunkirk, May 1940.

**LA RAILLEUSE** (1926). Sister ship to *L'Adroit*, above.

Destroyed by internal explosion at Casablanca, March 27, 1940.

**FOUDROYANT** (1929). Sister ship to *L'Adroit*, above.

Lost during withdrawal operations at Dunkirk, June 1940.

**BOURRASQUE** (1925), **OURAGAN** (1924), **SIROCO** (1925). 1,319 tons.

All lost during withdrawal operations at Dunkirk, May-June 1940.

**FRENCH**  
**Destroyers—continued**

WAR LOSS SECTION—*continued*



BISON

1937, Grand Studio, Malta.

**BISON** (1928). 2,436 tons.

Set on fire by bombs from enemy aircraft off Norwegian coast, and subsequently torpedoed as being beyond salvage, May 3, 1940.

**PANTHÈRE, CYCLONE and ORAGE.**

Reported to have been lost.

**Submarines**

**AJAX** (1930), **PERSÉE** (1931). 1,379 tons.

Both sunk in action with British squadron at Dakar, Sept. 23, 1940.

**ACHILLE** (1930), **AGOSTA** (1934), **OUESSANT** (1936). Sister ships to *Poncelet*, below.

Scuttled at Brest to avoid capture, June 1940.

**PONCELET** (1929). Sister ship to *Ajax* and *Persée*, above.

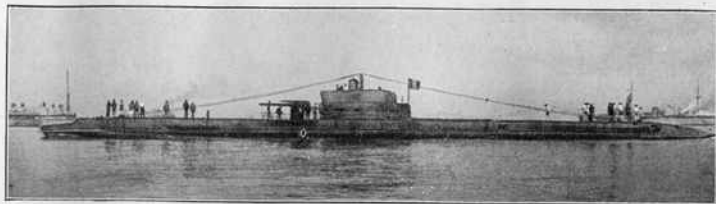
Scuttled off Port Gentil, Gaboon, November 1940.

**SFAX** (1934). Sister ship to *Ajax* and *Persée*, above.

Torpedoed by enemy submarine while on passage from Casablanca to Dakar, Dec. 19, 1940.

**NARVAL** (1925). 974 tons.

Lost through enemy action, January 1941.



DORIS

1929, *Marius Bar*, Toulon.

**DORIS** (1937). 552 tons.

Missing, May 1940.

(Several submarines under construction were destroyed on the slips, or after launching.)

**Sloops**

**RIGAULT DE GENOUILLY** (1932). 1,969 tons.

Torpedoed by British submarine in the Western Mediterranean, July 3, 1940.

**BOUGAINVILLE** (1931). Sister ship to *R. de Genouilly*, above.

Sunk in action with Free French Forces at Libreville, November 1940.

**Submarine Chasers.**

**CH 6, CH 7** (1939). 107 tons.

Lost through enemy action, October 1940.

**Oilers**

**LE NIGER** (1930). 5,482 tons.

Lost during withdrawal operations at Dunkirk, May 1940.

**RHONE** (1910). 2,785 tons.

Torpedoed by enemy submarine while on passage from Casablanca to Dakar, Dec. 19, 1940.

**Miscellaneous Vessels**

**BARSAC** (1929). 1,049 tons *gross*. (Auxiliary Patrol Vessel.)

Wrecked on Spanish coast near Vigo, Jan. 6, 1940.

(2 other smaller auxiliaries were lost during 1939.)

**POULMIC** (1937). 350 tons. (Transport de Personnel.)

Sunk by enemy action, October 1940.

WAR LOSS SECTION—continued

POLISH

Destroyers

- GROM** (1936). 2,144 tons.  
Sunk in action with enemy aircraft off Norwegian coast, May 1940.
- WICHER** (1928). 1,540 tons.  
Sunk in action with German destroyers and aircraft at Gdynia, Sept. 1939.

Submarine



ORZEL

1939, Official.

- ORZEL** (1938). 1,110 tons.  
Missing, June 1940.

Minelayer



GRYF

1938, Official.

- GRYF** (1936). 2,227 tons.  
Sunk in action with German destroyers and aircraft at Gdynia, Sept. 1939.

Torpedo Boat



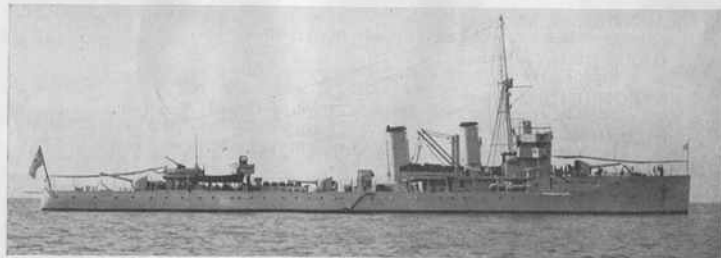
MAZUR

1938, Mr. Geo. Rutkowski.

- MAZUR** (1914). 349 tons.  
Sunk in action with German destroyers and aircraft at Gdynia, Sept. 1940.  
(Other Polish warships are understood to have been blown up to avoid capture.)

GREEK

Minelayer



HELLE.

1931 Photo, Official.

- HELLE** (1912). 2,083 tons.  
Torpedoed by Italian submarine while lying at anchor off Tinos, August 15, 1940.

WAR LOSS SECTION—continued

NORWEGIAN

Coast Defence Ships



NORGE

1933, Official.

**EIDSVOLD, NORGE** (1900). 4,166 tons.  
Both torpedoed by German destroyers at Narvik, April 9, 1940.

Minelayer



FROYA

1930, Official.

**FROYA** (1916). 595 tons.  
Sunk by German warship in Trondheim Fjord, April 1940.

Torpedo Boats

**AEGER** (1936). 597 tons.  
Sunk in action with enemy aircraft, April 1940.

**GARM** (1913). 540 tons.  
Sunk by enemy, April 1940.

**STEGG** (1917). 220 tons.  
Sunk by German warship *Bremse* in Hardanger Fjord, April 1940.

**SILD** (1900). 70 tons.  
Sunk by German motor torpedo boat, April 1940.

**SAEL** (1900). 90 tons.

**GRIB, JO, RAVN** (1904-06). 70 tons.

**BRAND, STORM** (1899). 79 tons.  
All sunk by enemy during April 1940.

Minesweeper

**RAUMA** (1939). 320 tons.  
Sunk by German warships in Oslo Fjord, April 1940.

Fishery Protection Vessels

**SENJA** (1937). 243 tons.

**MICHAEL SARS** (1900). 300 tons.  
Both sunk by enemy, April 1940.

WAR LOSS SECTION—*continued*

NETHERLANDS

Destroyer

**VAN GALEN** (1928). 1,316 tons.  
Sunk in action with enemy aircraft at Rotterdam, May 1940.

Submarine

One (identity not disclosed). Missing, December 1940.  
A submarine was lost in Jan. 1941.

Sloop



JOHAN MAURITS VAN NASSAU 1939, *Lieut. L. F. Bowman.*

**JOHAN MAURITS VAN NASSAU** (1932). 1,520 tons.  
Lost in Zuider Zee while resisting German invasion, May 1940.

Minelayer

**HYDRA** (1911). 593 tons.  
Lost in Zuider Zee while resisting German invasion, May 1940.

Gunboats

**FRISO** (1912). 540 tons.  
Lost in Zuider Zee while resisting German invasion, May 1940.

**BRINIO** (1912). Sister ship to *Friso*, above.  
Missing and believed lost on same occasion, May 1940.



BRINIO

1934.

Minesweepers

**WILLEM VAN EWIJK** (1937). 525 tons.  
Mined off Terschelling, Sept. 8, 1939.

**PIETER FLORISZ, ABRAHAM VAN DER HULST** (1937). Sister ships to  
*Willem van Ewijk*, above.  
Both missing, and believed lost during German invasion, May 1940.

WAR LOSS SECTION—*continued*

GERMAN

Armoured Ship



GRAF SPEE

1937, R. Perkins.

**ADMIRAL GRAF SPEE** (1934). 10,000 tons.  
Scuttled off Monte Video after being defeated in action with H.M.S. *Ajax*, *Achilles*  
and *Exeter*, Dec. 17, 1939.

Cruisers

**BLÜCHER** (1937). 10,000 tons.  
Sunk in Norwegian minefield after being disabled in action with Oslo forts, April 9,  
1940.

**LEIPZIG** (1929). 6,000 tons.  
Torpedoed by H.M.S. *Salmon*, Dec. 12, 1939, and may have been sunk.

**KÖNIGSBERG** (1927). 6,000 tons.  
Torpedoed and severely damaged by H.M.S. *Truant*, and subsequently sunk by Fleet  
Air Arm bombing attack at Bergen, April 9, 1940.

**KARLSRUHE** (1927). Sister ship to *Königsberg*, above.  
Sunk off Kristiansund (probably torpedoed), April 9, 1940.  
(A third ship of this type, the *Kön*, was torpedoed by H.M.S. *Ursula*, Dec. 14, 1939,  
and may have been sunk.)

Destroyers

**ANTON SCHMITT, WILHELM HEIDKAMP** (1937). 1,811 tons.  
Both sunk in action with British destroyer flotilla off Narvik, April 10, 1940.



DIETHER VON ROEDER

1938, W. Schäfer

**HANS LÜDEMANN, HERMANN KÜNNE, DIETHER VON ROEDER** (1937).  
Sister ships to *Anton Schmitt*, before mentioned.  
Sunk in action with H.M.S. *Warspite* and British destroyers off Narvik, April 13  
1940.



**Destroyers—*continued***

**ERICH GIESE, ERICH KOELLNER, BERND VON ARNIM, WOLFGANG ZENKER** (1936-37). 1,625 tons.

Sunk in action with H.M.S. *Warspite* and British destroyers, April 13, 1940.



MAX SCHULTZ

1937, *W. Schiffer*.

**LEBERECHT MAASS, MAX SCHULTZ** (1935). Sister ships to *Erich Giese*, above. Admitted by Germany to have been lost—possibly during operations against Poland in Sept. 1939.

**GEORG THIELE and BRUNO HEINEMANN.**  
Believed to have been lost.

**Torpedo Boats**

**ALBATROS** (1926). 800 tons.

Believed to have been sunk in action with Norwegian minelayer *Olaf Tryggvason*, April 9, 1940.

One torpedoed and sunk off the French coast by H.M.S. *Swordfish* in October 1940.

**Submarines**

When war began, Germany had about 70 submarines available. Frequent announcements were subsequently made of the destruction of U-boats by British naval and air forces, and it is probable that few of the above 70 still remain in service. U 13 (1935), 250 tons, is the only number of a German submarine to be announced officially as lost.

**Motor Torpedo Boats**

Three were sunk by British and French destroyers during Norwegian operations, April 1940; three were sunk by British aircraft in May and June, 1940; and one by H.M.S. *Malcolm* and *Verity* on Aug. 14, 1940; two while acting as convoy escorts off French coast in October 1940; and one by British light forces in the North Sea, Nov. 19, 1940.

**Minesweepers**

**M 132** (1919). 525 tons.

Wrecked on West coast of Jutland, Jan. 1940.

(Another of this type was mined Sept. 10, 1940).

**Trawlers**

Vessels of this type were mined on Oct. 21, Nov. 25, Nov. 27 and Dec. 4, 1939, and one foundered in bad weather on Dec. 30, 1939, all in the Baltic approaches. Another was sunk by British aircraft in the North Sea, March 27, 1940; one was sunk by French destroyers in the Skagerrak in April 1940, and one by H.M.S. *Malcolm* and *Verity* on Aug. 14, 1940. An unidentified warship was seen to blow up off Göteborg in May 1940.

**Motor Launch**

One was sunk in a minefield in Baltic approaches, Dec. 8, 1939.

WAR LOSS SECTION—*continued*

ITALIAN

Cruiser

- BARTOLOMEO COLLEONI** (1930). 5,069 tons.  
Sunk by gunfire of H.M.S. *Sydney* to N.W. of Crete, July 19, 1940.

Destroyers

- ESPERO** (1927). 1,073 tons.  
Sunk by gunfire of British Mediterranean Fleet, June 27, 1940.
- ZEFFIRO** (1927). Sister ship to *Espero*, above.  
Sunk by gunfire of British Mediterranean Fleet, July 9, 1940.
- One of "Navigatori" type, 1,628 tons.  
Sunk by bombing attack of Fleet Air Arm at Augusta, July 10, 1940.
- One sunk by bombing attack of Fleet Air Arm at Bomba, Libya, August 22, 1940.
- ARTIGLIERE** (1937). 1,620 tons.  
Sunk in action with H.M.S. *Ajax* and *York*, October 11, 1940.
- FRANCESCO NULLO** (1925). 1,058 tons.  
Driven ashore and torpedoed by H.M.S. *Kimberley*, October 21, 1940.  
One disabled by R.A.F. and seized by Greek forces at Santi Quaranta, Dec. 4, 1940.

Torpedo Boats

- One sunk in Fleet Air Arm attack at Benghazi, Sept. 16, 1940.
- PALESTRO** (1919). 862 tons.  
Torpedoed by H.M.S. *Osiris*, Sept. 22, 1940.
- Two of "Partenope" type, 679 tons.  
Sunk in action with H.M.S. *Ajax*, October 11, 1940.
- One of "Chimene" class.  
Sunk in action with British Mediterranean Fleet, January 10, 1941.

Submarines

- GALILEO GALILEI** (1934). 880 tons.  
Surrendered to H.M.S. *Moonstone*, June 19, 1940.
- NAIADE** (1933). 590 tons.  
Sunk by British warships off Libyan coast, December 14, 1940.
- ARCHIMEDE** (1933), **EVANGELISTA TORRICELLI** (1934).  
Sister ships to *Galileo Galilei*, above.
- DURBO** (1938). 615 tons.
- PERLA** (1936). 620 tons.  
The above, together with about 20 other submarines, are understood to have been destroyed during June—October 1940.  
One was torpedoed by H.M.S. *Thunderbolt* in December 1940.
- CONSOLE GENERALE LIUZZI, GALVANI, UEBI SCEBELI, MACALLE, RUBINO.**  
Believed to be among those lost.

Motor Torpedo Boats

- One sunk by French Navy off Riviera, June 13, 1940.  
Two sunk by gunfire of British cruisers, Sept. 4, 1940.

Minesweeper

- One sunk by Fleet Air Arm in bombing attack at Tobruk, June 13, 1940.

Gunnery Training Ship

- SAN GIORGIO** (1908). 9,232 tons.  
Heavily damaged and beached during bombing attack by Fleet Air Arm at Tobruk, June 11, 1940, and is probably a total loss.

Depot Ship for Submarines

- One sunk in bombing attack at Bomba, Libya, August 22, 1940.

---

WAR LOSS ADDENDUM

British:

- Trawler **PELTON**, 358 tons gross, sunk in Jan. 1941.

# GENERAL INDEX (Named Ships only.)

**ABBEYDALE-BEATTY**

ABBREVIATIONS: (A) signifies Argentine, (Br) Brazilian, (Chil) Chilean, (C) Chinese, (Cu) Cuban, (Da) Danish, (F) French, (G) German, (Gr) Greek, (I) Italian, (J) Japanese, (N) Netherlands, (Nor) Norwegian, (P) Peruvian, (Po) Polish, (Port) Portuguese, (Ro) Rumanian, (RuS) Russian, (Sp) Spanish, (Sw) Swedish, (T) Turkish, (U.S.) United States. No descriptive term implies British Empire.

A	ALB-AMB	PAGE	AME-ARC	PAGE	ARC-ASM	PAGE	ASP-BAI	PAGE	BAI-BEA	PAGE
ABB-ALB	Albatross	85	America (P)	374	Arctic (U.S.)	500	Aspirante (Uruguayan)	511	Baire (Cu)	141
Abbeyle	Albatross (U.S.)	503	American Sailor (U.S.)	509	Arctic Ranger	90	Aspis (Gr)	241	Baise (F)	205
Abdel	Albermarle (U.S.)	496	America Susman (U.S.)	509	Arcton (Sw)	455	Assen (Polgaria)	122	Balkan (RuS)	408
Abderr	Alberich (G)	235	Americo Vespucci (I)	285	Arcturus (U.S.)	501	Assiniboine	109	Balch (U.S.)	486
Aberdeen	Albertico da Barbiano (I)	265	Ametista (I)	279	Arctic (Ro)	389	Asta (G)	234	Balder (N)	364
Abingdon	Albino	110	Amiens (F)	199	Arden	197	Anton Villa	xiv	Baldino (I)	269
Abraham Crijnsen (N)	Albert Leo Schlageter (G)	424	Amiral Charrier (F)	203	Arden (N)	368	Astoria (U.S.)	475	Baldwin (I)	375
Abraham van der Hulst (N)	Alberto di Giussano (I)	265	Amiral Monchez (F)	204	Ares (Gr)	243	Astrea (Sw)	435	Balistic (F)	190
Abtao (Chil)	Albona (I)	283	Amiral Murgescu (Ro)	387	Arcthoussa (Gr)	240	Astree (F)	192	Ballarast	101
Abukuma (J)	Albury	81	Amiral Senés (F)	195	Arcthusa (F)	51	Astrolabe (F)	394	Balard (U.S.)	202
Abacia	Aleca Galiano (Sp)	419	Ammiraglio Cagni (I)	276	Arctus (I)	193	Astronon (RuS)	407	Balby (F)	101
Acacia	Alcazar (Sp)	422	Ammiraglio Caracciolo (I)	276	Arctus (I)	271	Atago (J)	310	Balimore (U.S.)	474
Acacia	Aleone (I)	271	Ammiraglio Costanzo Ciano (I)	260	Argenteuil	110	Atak (T)	448	Bancroft (N)	354
Acacia	Alex (Chil)	134	Ammiraglio des Geneys (I)	281	Argo (F)	192	Ataka (J)	338	Bandit	95
Acasta	Aldebaran (I)	272	Ammiraglio Magnacchi (I)	286	Argo (Gr)	243	Atalanta (U.S.C.G.)	508	Bandolero	90
Achates	Aldebaran (N)	364	Ammiraglio Millo (I)	276	Argo (I)	279	Atalante (F)	193	Bangor	108
Acheron (F)	Alder	91	Ammiraglio Saint Bon (I)	276	Argo (Sw)	425	Atami (J)	338	Bangradian (Thal)	80
Acheron (G)	Aldersdale	95	Amplitude (F)	193	Argo (U.S.)	508	Atherstone	50	Bantam (N)	363
Achille (F)	Alecto	88	Amsterdam (U.S.)	480	Argonaut (U.S.)	492	Atilette (F)	207	Barb (U.S.)	490
Achilles	Aleksandr Sibiriakoff (RuS)	412	Ancre (F)	198	Argonauta (I)	270	Atlas (T)	446	Barbarian	92
Achro (Br)	Alert (U.S.)	508	Andania	285	Argonauta (U.S.)	193	Atlanta (U.S.)	490	Barbarigo (I)	272
Acteon (F)	Alessandro Volta (I)	505	Anderson (U.S.)	484	Argos	85	Atlas (Sw)	437	Barbette	92
Actif (F)	Alexander Hamilton (U.S.)	505	Andrea Doria (I)	256	Argyle	292	Atropo (I)	277	Barbican	92
Active (U.S.C.G.)	Alexander Lahovari (Ro)	389	Andromaque (F)	192	Argyle	107	Attontiff (F)	207	Barbrook	92
Acushnet (U.S.)	Alfater (RuS)	403	Andromeda (I)	272	Argyres	xiv	Attulo Regolo (I)	260	Barcombe	92
Adamant	Alfred Mackinlay (A)	139	Andromède (F)	192	Arholma (Sw)	436	Auckland	78	Barcroft	92
Adamante	Alfredo Oriani (I)	268	Anifritte (I)	279	Ariadne (U.S.C.G.)	508	Audace (I)	274, 288	Barford	92
Adelaide	Algérie (F)	177	Angamos (Chil)	137	Ariake (J)	322	Aude (F)	206	Barholm	92
Adige (I)	Algonquin (U.S.C.G.)	505	Angelo Bassini (I)	272	Arlis (U.S.)	496	Augusta (U.S.)	478	Barid	92
Admiral Graf Spee (G)	Alhathi	106	Angthong (Thal)	442	Ariel (I)	271	Augusto Riboty (I)	271	Barisham	38
Admiral Hipper (G)	Aliakmon (Gr)	242	Annapolis	199	Arizona (U.S.)	465	Auk (U.S.)	503	Barl (I)	266
Admiral Scheer (G)	Alkyon (I)	240	Annibal Mendonça (Br)	129	Ark Royal	36	Aurora	51	Barker (U.S.)	92
Adour (F)	Allegny (U.S.)	502	Antares (I)	272	Arkansas (U.S.)	469	Aurora (I)	285	Bariane	92
Adua (I)	Almirante Antequera (Sp)	419	Antares (Sw)	435	Arkhangelsk (RuS)	400	Aurora (U.S.)	508	Barlight	92
Adventure	Almirante Brown (A)	116	Antares (U.S.)	501	Arkona (G)	229	Aurore (F)	192	Barlow	92
Adversus	Almirante Cervera (Sp)	417	Antelope	64	Arleux	110	Ansonia (I)	292	Barnmouth	92
Aeger (Nor)	Almirante Condell (Chil)	134	Anteo (F)	286	Arlo	496	Austral (F)	204	Barnside	92
Aegir (celand)	Almirante Grau (F)	372	Anthony	64	Armando Diaz (I)	264	Avalanche (F)	208	Barnstaple	92
Aegos (Gr)	Almirante Guise (P)	373	Antietam (U.S.C.G.)	508	Armentières	198	Aventurier (F)	208	Barnstaple	92
Afonso de Albuquerque (Port)	Almirante Latour (Chil)	132	Antigon (F)	192	Armidale	192	Avenir (Gr)	186	Barnet	90
Afridi	Almirante Lynch (Chil)	134	Antiope (F)	193	Arno (I)	291	Avère (I)	268	Barnett (U.S.)	501
Agnass (U.S.)	Almirante Miranda (Sp)	419	Antioquia (Col)	139	Arce (N)	363	Avocat (U.S.)	503	Barney (U.S.)	489
Agate	Almirante Saldanha (Braz)	128	Anton Schmidt (G)	xxii	Arcoostook (U.S.)	497	Avrona (RuS)	409	Barnstone	92
Agate (F)	Almirante Schultz (Port)	382	Anton da Xist (I)	274	Arcton (U.S.)	210	Ayuda (U.S.)	242	Barrville	92
Agosta (F)	Almirante Simpson (Chil)	139	Antonio Mosto (I)	274	Aras (F)	199	Axum (I)	479	Barracuda (U.S.)	492
Agosta (N)	Almirante Valdes (Sp)	419	Antonio Pacinotti (I)	285	Arrow	64	Ayanami (J)	323	Barrage	92
Aguti (Estonian)	Almond	90	Antonio Pigafetta (I)	270	Arsenal	90	Aydin Reis (T)	449	Baranca	92
Ahven (Finnish)	Alois Schless (I)	152	Artem (RuS)	422	Arcton (Sp)	422	Ayuda (U.S.)	487	Barranquilla (Colombian)	139
Aida (Egyptian)	Alorette (F)	207	Artem (I)	402	Arctus (Thal)	439	Ayuda (U.S.)	439	Barreille	92
Aigle (F)	Alpino (I)	268	Aoba (J)	313	Artemis (RuS)	496	Azerbaijan (Iranian)	246	Barrier	92
Aigli (Gr)	Alpino Attilio Bagnolini (I)	276	Appa (Br)	126	Artemis (F)	192	Azlo (I)	282	Barry (U.S.)	488
Ailette (F)	Altres	81	Appleleaf	92	Arteveld (Belgian)	122	Azapardo (A.)	151	Barzac (F)	xviii
Airone (I)	Alsede (Sp)	52	Applique (F)	207	Artigliere (I)	268	Artillerista (Latvian)	342	Barzolomeo Colleoni (I)	xviii
Ajax	Altair (I)	272	Applique (U.S.)	163	Artillerista (U.S.)	507	Artillerista (U.S.)	507	Barzolomeo Dias (Port)	380
Ajuricaba (Br)	Altair (Sw)	425	Arquimede (F)	270	Arville (I)	192	Asagao (J)	324	Basaraha (I)	888
Akagi (J)	Altair (U.S.)	498	Aradam (I)	279	Asagiri (J)	323	Asagiri (J)	323	Basque (F)	x
Akaki (J)	Altmark (G)	234	Aragonite	xiii	Asagiri (J)	323	Asagiri (J)	323	Basque (F)	188
Akakuki (J)	Alta (U.S.)	323	Aragua (Venezuelan)	513	Asagiri (J)	323	Babbits (U.S.)	480	Bass (U.S.)	492
Akathone (J)	Alta (U.S.)	323	Aragua (Venezuelan)	513	Asagiri (J)	323	Babbits (U.S.)	480	Basset	90
Akikaze (J)	Alta (U.S.)	323	Aragua (Venezuelan)	513	Asagiri (J)	323	Babbits (U.S.)	480	Bathurst	101
Akino (T)	Akin (T)	424	Aragua (Venezuelan)	513	Asagiri (J)	323	Babbits (U.S.)	480	Bathurst (A)	120
Al Sarea (Egypt)	Al Sarea (Egypt)	151	Aragua (Venezuelan)	513	Asagiri (J)	323	Babbits (U.S.)	480	Batray (T)	446
Alahama (U.S.)	Alahama (U.S.)	323	Aragua (Venezuelan)	513	Asagiri (J)	323	Babbits (U.S.)	480	Bayrun (Sw)	434
Alaska (J)	Alaska (J)	339	Aragua (Venezuelan)	513	Asagiri (J)	323	Babbits (U.S.)	480	Bay	90
Albatros (J)	Albatros (J)	323	Aragua (Venezuelan)	513	Asagiri (J)	323	Babbits (U.S.)	480	Bayonet	92
Albatros (N)	Albatros (N)	272	Aragua (Venezuelan)	513	Asagiri (J)	323	Babbits (U.S.)	480	Bay Spring (U.S.)	502
Albatros (N)	Albatros (N)	364	Aragua (Venezuelan)	513	Asagiri (J)	323	Babbits (U.S.)	480	Beagle	90

B—continued		BLA—BRI	BRI—CAM	CAM—CAY	CAY—CHU	CHU—CON
PAGE	PAGE	PAGE	PAGE	PAGE	PAGE	PAGE
BEA—BLA		Blackwater	Brigand	Campeltown	Cayuga (U.S.)	Chu Kuan (C)
Béarn (F)	176	Bianjubol (Thal)	Brighton	Canden (U.S.)	Cayra (Br)	Chu Ning (C)
Beaufort (U.S.)	50	Blackop (U.S.)	Brighton Belle	Camicia Vera (I)	Cedar	Chunphorn (Thal)
Beaumaris	x	Bianche	Brighton Queen	Camicia (Br)	Cedardale	Churchill
Beaumonts	133	Blanco Encalada (Chil)	Brilliant	Campbell	Celerol	Churruco (Sp)
Beaver (U.S.)	499	Blink (Nor)	Brim (I)	Campador V	Centaur (I)	Chu Tai (C)
Bedfordshire	90	Bilz (G)	Brine (I)	Campio	Centurion	Chu Yin (C)
Bedouin	61	Bloodhound	Brinlo (N)	Canadian Prince	Cépet (F)	Chu Yu (C)
Beck	91	Bliicher (G)	Bristol (U.S.)	Canailles (Sp)	Cer (Yugo-Slav)	Cicla
Bell (I)	279	Bliicher (Rus)	Britomart	Canana (Br)	Ceramica (I)	Ciclope (I)
Beira (Port)	354	Bius	Broadway	Canara (I)	Ceres	Cigno (I)
Beiffat	48	Bluebird (U.S.)	Broke	Canarias (Sp)	Cerere (I)	Cimarron (U.S.)
Belfort (F)	199, 204	Bluefish (U.S.)	Bromy (G)	Canaviera (Br)	Cérès	Cincheon (F)
Belgo	96	Blyskawica (Po)	Bronte (I)	Canaviers (Br)	Cérès (F)	Cincinnati (U.S.)
Belgrano (A)	517	Blyth	Brookly (U.S.)	Candia Perez (Sp)	Céro (U.S.)	Ciro (I)
Belizario (Yugo Slav)	119	Boadicea	Brooklyn (U.S.)	Canopo (I)	Cervantes (A)	Ciro (I)
Belknap (U.S.)	497	Boardale	Brooklyn (U.S.)	Canopus (N)	Cesare Battisti (I)	Ciro Menotti (I)
Bellatrix (N)	364	Bobolink (U.S.)	Brooks (U.S.)	Canopus (U.S.)	Cesare (U.S.)	Cleair (Sp)
Bellechasse	110	Bogdan (U.S.)	Broom (U.S.)	Canovas del Castillo (S)	Ceylon	Cittadella
Bellona (Da)	147	Boeres (N)	Brosen (G)	Cap Bear (F)	Chacabuco (Chil)	Citta di Milano (I)
Belmont	69	Bogus (U.S.)	Bogor (N)	Cap Carter (F)	Chacabuco (Iranian)	Citta di Siracusa (I)
Belmonte (Br)	127	Bogus (U.S.)	Bogor (N)	Cap Carrouge (F)	Chadhaaz (Iranian)	Claro
Belomoretz (Bulgaria)	123	Bogus (U.S.)	Bogor (N)	Cap d'Antier (F)	Chahsevar (Iranian)	Clark (U.S.)
Bengal	90	Boise (U.S.)	Bogus (U.S.)	Cape Argona	Challengé	Clas Fleming (Sw)
Bengal (F)	204	Bolido (Sp)	Bogus (U.S.)	Cape Arlyuskin	Chamouli (F)	Claudio Druso (I)
Benham (U.S.)	485	Bolshevik (Rus)	Bogus (U.S.)	Cape Conorin	Champion (F)	Claudio Tiberio (I)
Bennett (U.S.)	184	Bolshevik (U.S.)	Bogus (U.S.)	Cape Finisterre	Champain (F)	Claus van Bevern (G)
Benson (U.S.)	484	Bombard (F)	Bogus (U.S.)	Cape Passaro	Champain (U.S.)	Clamenceau (F)
Benvolio	xiv	Bonaventure	Bogus (U.S.)	Cape Siretoka	Chand (U.S.)	Clemson (U.S.)
Begrad (Yugoslav)	516	Bonafish (U.S.)	Bogus (U.S.)	Capella (U.S.)	Chandler (U.S.)	Cleopatra
Begruff (G)	232	Bonin (U.S.)	Bogus (U.S.)	Cap Ferrat (F)	Chandraburi (Thal)	Cleveland
Berberis	91	Bonhomme Richard (U.S.)	Bogus (U.S.)	Cap Frelch (F)	Chang (Thal)	Cleveland (U.S.)
Berens	110	Bonita (U.S.)	Bogus (U.S.)	Capin (Cuba)	Chang Ning (C)	Climens (I)
Beresina (Rus)	408	Bordelais (F)	Bogus (U.S.)	Capitan Cabrera (Paraguay)	Chao Ho (C)	Clio (I)
Bertho (I)	279	Burdock (U.S.)	Bogus (U.S.)	Capitan Dumitrescu (C, Ro)	Chao Phya (Thal)	Clive
Berk (T)	448	Burel (U.S.)	Bogus (U.S.)	Capitan Miranda (Uruguay)	Charente (F)	Clorinda (F)
Berkley	60	Bures	Bogus (U.S.)	Capitan O'Brien (Chil)	Charles (F)	Cloud
Bernadou (U.S.)	489	Burca (U.S.)	Bogus (U.S.)	Capitano Raffaele Tarantini (I)	Charles F. Hughes (U.S.)	Clyde (2 ships)
Bernd von Armin (G)	xiii	Burke (U.S.)	Bogus (U.S.)	Capitan Quevedo (Cuba)	Charleston (U.S.)	Coahuila (Mexican)
Berne	110	Burnham	Bogus (U.S.)	Capitan Thompson (Chil)	Charlestown	Cocto (I)
Bernier	110	Burwell	Bogus (U.S.)	Cap Negro (F)	Charlogh (Iranian)	Cockchafer
Berrio (Port)	384	Burwell (Po)	Bogus (U.S.)	Carabinieri (I)	Chartart (Rus)	Cod (U.S.)
Bersaglieri (I)	238	Butternut (U.S.)	Bogus (U.S.)	Carabobo (Colombian)	Chatearenault (F)	Codrington
Berthier	110	Buxton	Bogus (U.S.)	Caradoc	Chartruis	Coedlog (F)
Berwick	46	Boungaville (F)	Bogus (U.S.)	Carajas (Br)	Chaumont (U.S.)	Colbert (F)
Beryl	90	Bouonnais (F)	Bogus (U.S.)	Cardif	Chaka (Rus)	Cold Snap
Bessum (Rus)	408	Bourrasque (F)	Bogus (U.S.)	Cardinal (U.S.)	Chelan (U.S.)	Cole (U.S.)
Beskytteren (Da)	149	Boutwell (U.S.)	Bogus (U.S.)	Caribe (Venezuelan)	Colfax	Colfax (U.S.)
Bespehtadai (Rus)	400	Bowditch (U.S.)	Bogus (U.S.)	Caribou	Cheng Ning (C)	Colhoum (U.S.)
Beverley	67	Boxol	Bogus (U.S.)	Cariddi (I)	Cherbon (N)	Colne
Beveziers (F)	192	Boyaca (Colombian)	Bogus (U.S.)	Carinthia	Chernomoretz (Bulgaria)	Colocolo (Chil)
Bezbinjk (Rus)	405	Borne	Bogus (U.S.)	Carlo (Br)	Cherokov (U.S.)	Colombo
Bezpokoini (Rus)	400	Boy Ray	Bogus (U.S.)	Carlo Mirabelle (I)	Cherryleaf	Colorado (U.S.)
Bezpreschni (Rus)	400	Bradbur	Bogus (U.S.)	Carl Zeiss (G)	Cheruo (I)	Columbia
Bexvriuk (Rus)	405	Bradford	Bogus (U.S.)	Cartagena (Colombian)	Chernovaya Ukraina (Rus)	Columbia (U.S.)
Bidde (U.S.)	489	Bradman	Bogus (U.S.)	Cartagenero (Sp)	Chersterfield	Comanche (U.S.C.G.)
Bideford	78	Brage (Nor.)	Bogus (U.S.)	Cartier	Chestnut	Comandante Cappellini (I)
Bidjesta (Rus)	407	Bramble	Bogus (U.S.)	Cartizan (U.S.)	Chestnut (U.S.)	Comandante Faà di Bruno (I)
Bielova (Rus)	400	Brambleleaf	Bogus (U.S.)	Casano Aranjio (Port)	Chesvalier (U.S.)	Comet
Bieluga (Rus)	404	Brand (Nor)	Bogus (U.S.)	Casablanca (F)	Chesvren (F)	Comfort
Birago (G)	235	Brandenburg (Sw)	Bogus (U.S.)	Cascade	Cheu (U.S.)	Commandant Bory (F)
Birch (U.S.)	90	Brant	Bogus (U.S.)	Casca (U.S.)	Chewik (U.S.)	Commandant Bourdais (F)
Birehol	97	Brant (U.S.)	Bogus (U.S.)	Casca (U.S.)	Chiang Ching (Manchukuo)	Commandant Delage (F)
Birinci Inonu (T)	446	Brant (Rus)	Bogus (U.S.)	Casque (F)	Chiang Pien (Manchukuo)	Commandant Domine (F)
Birmingham	40	Brazen	Bogus (U.S.)	Cassard (F)	Chiang Tung (Manchukuo)	Commandant Duboe (F)
Birmingham (U.S.)	480	Brazos (U.S.)	Bogus (U.S.)	Cassin (U.S.)	Chiao Jih (C)	Commandant Riviere (F)
Birnie	110	Brockinridge (U.S.)	Bogus (U.S.)	Cassiope (I)	Chiao Yen (C)	Commandant Teste (F)
Biscayne (U.S.)	496	Brodie (U.S.)	Bogus (U.S.)	Casteldiario (I)	Chicherin (Rus)	Comodoro Py (A)
Bishopdale	95	Brome (G)	Bogus (U.S.)	Castletown	Chien Kang (C)	Comodoro Rivadavia (A)
Bismarck (G)	212	Brenner (I)	Bogus (U.S.)	Castor (F)	Childs (U.S.)	Comox
Bison (F)	xviii	Brenta (I)	Bogus (U.S.)	Castor (N)	Chimo (F)	Compton
Bistri (Rus)	400	Brestois (F)	Bogus (U.S.)	Castor (Sw)	Chimim (Manchukuo)	Concord (U.S.)
Bittern	xiv	Bretagne (F)	Bogus (U.S.)	Castore (I)	Chin Jen (Manchukuo)	Concord (Chil)
Blackburn Rovers	xiv	Bridge (U.S.)	Bogus (U.S.)	Catalpa (U.S.)	Chin Yen (C)	Condofer (F)
Blackfish (U.S.)	490	Bridgeport (U.S.)	Bogus (U.S.)	Catara (U.S.)	Choban (Thal)	Confienza (I)
Black Hawk (U.S.)	498	Bridgewater	Bogus (U.S.)	Catbird (U.S.)	Chorick (Rus)	Conquadrante (F)
Blackpool	80	Bridlington	Bogus (U.S.)	Cattiatock	Chrysanthemum	Console Generale Liuzzi (I)
Black Swan	76	Briddport	Bogus (U.S.)	Cayton Wyke	Chuka (Rus)	Constanta (Ro)
Blackthorn	90					Conte di Cavour (I)

GENERAL INDEX—continued.

CONTRAMAESTRE BRITO (CHIL)—FRATELLI CAIROLI (I)

C—continued		DAH—D'I		DIC—DUQ		DUR—ENR		ENR—FAN		FAR—FRA	
	PAGE		PAGE		PAGE		PAGE		PAGE		PAGE
CON—DAH		Dahme (G)	230	Dieckerson (U.S.)	489	Duranco (F)	205	Enrique Villendas (Cu)	141	Fareham	81
Conway (U.S.)	89	Dainty	94	Dido	47	Durango (Mex)	346	Euseigne Ballande (F)	198	Farm (Nor)	370
Cornachan (U.S.)	187	Daisy	107	Diether von Roeder (G)	xxii	Durazzo (I)	282	Euseigne Henry (F)	199	Faro (Port)	382
Coral (I)	193	Dale (U.S.)	487	Diez de Octubre (Cu)	141	Durban	55	Enterprise	53	Farragut (U.S.)	487
Cornell	90	Dale y Ocho de Julio (Uruguay)	449	Diguat (N)	363	Durnitor (Yugo-Slav)	517	Enterprise (U.S.A.)	471	Fate (I)	282
Corallo (I)	279	Dallas (U.S.)	488	Diguat (U.S.)	363	Dvrdvatskyatvo Oktiabrya (Rus)	408	Entre Rios (A)	118	Faustnet	92
Corazzini (I)	279	Dalmacija (Yugo-Slav)	508	Diligence (U.S.)	408	Dvigatel (Rus)	404	Entroply (U.S.)	496	Faulknor	63
Cordoba (A)	119	Dalmatia (A (Da))	291	Diligent (F)	200	Dwart	186	Eol (U.S.)	421	Faunce (U.S.)	508
Cordoba (Col)	139	Danae	150	Diomedes (Yugo-Slav)	517	Dzarrzhinski (Rus)	408	Epervier (F)	197	Fauteau L. (F)	292
Cormoran (F)	204	Danië (F)	194	Dione (U.S.C.G.)	508	Dzarrzhinski (Rus)	408	Epinal (F)	199	Fazant (N)	363
Cornelian (U.S.)	503	Dandolo (I)	277	Distol	97	Dzarrzhinski (Rus)	408	Ereole (I)	202	Fearless	63
Cornellian	90	Danteo (A)	90	Dittmanchen (G)	294	Dzarrzhinski (Rus)	408	Erich (U.S.)	484	Fedor Dzerzhinski (Rus)	401
Cornélie (F)	192	Dante de Lutti (I)	287	Diu (Port)	382	Erich Giese (G)	xxiii	Erich Koellner (G)	xxiii	Fedor Litke (Rus)	412
Cornelio Silla (I)	260	Danteo (A)	379	Dix (U.S.C.G.)	508	Erich Steinbrinck (G)	222	Erich Steinbrinck (G)	222	Fermoy	81
Cornelis Drobbed (N)	361	Daphne (U.S.)	508	Dixie (U.S.)	498	Eriasson (U.S.)	484	Eridanus (N)	364	Ferne	60
Cornflower	79	Dar II (Sp)	422	Djerr (Nor)	369	Erie (U.S.)	435	Eritrea (I)	287	Ferolano (Sp)	423
Cornwall	46	Dardo (I)	269	D.N.O.G. (Br.)	129	Erik (U.S.)	497	Eritrea (I)	287	Fifeshire	xiv
Cornwallis	195	Dardel (Egyptian)	151	Dobbin (U.S.)	498	Erik (U.S.)	497	Erika (U.S.)	440	Fiji	47
Coronel Bolognesi (P)	372	Daring	x	Dobrina Nikitich (Rus)	412	Eagle 10 to 58 (U.S.)	494	Erik (U.S.)	440	Finnick Corridon (I)	280
Coronel Portillo (P)	374	Dar II (Sp)	422	Dobro Millire (I)	491	Eagle 10 to 58 (U.S.)	494	Eriak (Rus)	413	Finnick (U.S.)	490
Coronet	93	Dardo (I)	269	Dollar	110	Eberle (U.S.)	484	Erimo (J)	340	Finch (U.S.)	503
Corrientes (A)	118	Dardel (Egyptian)	151	Dolphin (U.S.)	491	Ebonol	97	Eritrea (I)	287	Finch (U.S.)	503
Corry (U.S.)	483	Daring	x	Dom Jo de Castro (Port)	384	Ebony (U.S.)	497	Erika (U.S.)	440	Finch (U.S.)	503
Corsario (Uruguay)	511	Dar II (Sp)	422	Donau (G)	91	Eclipse	63	Ermanno Carliotto (I)	428	Finch (U.S.)	503
Corvina (U.S.)	490	Dardo (I)	269	Doon	91	Eden	93	Ermanno Carliotto (I)	428	Finch (U.S.)	503
Cossack	61	Dardel (Egyptian)	151	Doune (G)	91	Eddy	93	Ermanno Carliotto (I)	428	Finch (U.S.)	503
Cotentin (F)	297	Dardel (Egyptian)	151	Doune (G)	91	Eddy	93	Ermanno Carliotto (I)	428	Finch (U.S.)	503
Cotswold	60	Dardel (Egyptian)	151	Doune (G)	91	Eddy	93	Ermanno Carliotto (I)	428	Finch (U.S.)	503
Cottesmore	60	Dardel (Egyptian)	151	Doune (G)	91	Eddy	93	Ermanno Carliotto (I)	428	Finch (U.S.)	503
Cottonwood (U.S.)	497	Dardel (Egyptian)	151	Doune (G)	91	Eddy	93	Ermanno Carliotto (I)	428	Finch (U.S.)	503
Coucy (F)	199	Dardel (Egyptian)	151	Doune (G)	91	Eddy	93	Ermanno Carliotto (I)	428	Finch (U.S.)	503
Cowhar	108	Dardel (Egyptian)	151	Doune (G)	91	Eddy	93	Ermanno Carliotto (I)	428	Finch (U.S.)	503
Coundouriotis (Gr)	239	Dardel (Egyptian)	151	Doune (G)	91	Eddy	93	Ermanno Carliotto (I)	428	Finch (U.S.)	503
Courageous	viii	Dardel (Egyptian)	151	Doune (G)	91	Eddy	93	Ermanno Carliotto (I)	428	Finch (U.S.)	503
Courbet (F)	91	Dardel (Egyptian)	151	Doune (G)	91	Eddy	93	Ermanno Carliotto (I)	428	Finch (U.S.)	503
Cowley	57	Dardel (Egyptian)	151	Doune (G)	91	Eddy	93	Ermanno Carliotto (I)	428	Finch (U.S.)	503
Cowlichan	108	Dardel (Egyptian)	151	Doune (G)	91	Eddy	93	Ermanno Carliotto (I)	428	Finch (U.S.)	503
Crane (U.S.)	498	Dardel (Egyptian)	151	Doune (G)	91	Eddy	93	Ermanno Carliotto (I)	428	Finch (U.S.)	503
Crassia	106	Dardel (Egyptian)	151	Doune (G)	91	Eddy	93	Ermanno Carliotto (I)	428	Finch (U.S.)	503
Craven (U.S.)	485	Dardel (Egyptian)	151	Doune (G)	91	Eddy	93	Ermanno Carliotto (I)	428	Finch (U.S.)	503
Crawford (U.S.)	508	Dardel (Egyptian)	151	Doune (G)	91	Eddy	93	Ermanno Carliotto (I)	428	Finch (U.S.)	503
Crescent Moon	93	Dardel (Egyptian)	151	Doune (G)	91	Eddy	93	Ermanno Carliotto (I)	428	Finch (U.S.)	503
Crested Eagle	xxv	Dardel (Egyptian)	151	Doune (G)	91	Eddy	93	Ermanno Carliotto (I)	428	Finch (U.S.)	503
Crestflower	xiv	Dardel (Egyptian)	151	Doune (G)	91	Eddy	93	Ermanno Carliotto (I)	428	Finch (U.S.)	503
Cricknet	82	Dardel (Egyptian)	151	Doune (G)	91	Eddy	93	Ermanno Carliotto (I)	428	Finch (U.S.)	503
Cristoforo Colombo (I)	285	Dardel (Egyptian)	151	Doune (G)	91	Eddy	93	Ermanno Carliotto (I)	428	Finch (U.S.)	503
Cromarty	80	Dardel (Egyptian)	151	Doune (G)	91	Eddy	93	Ermanno Carliotto (I)	428	Finch (U.S.)	503
Crosby (U.S.)	489	Dardel (Egyptian)	151	Doune (G)	91	Eddy	93	Ermanno Carliotto (I)	428	Finch (U.S.)	503
Crotone (I)	282	Dardel (Egyptian)	151	Doune (G)	91	Eddy	93	Ermanno Carliotto (I)	428	Finch (U.S.)	503
Crobiane (Hun)	244	Dardel (Egyptian)	151	Doune (G)	91	Eddy	93	Ermanno Carliotto (I)	428	Finch (U.S.)	503
Cuba (Cu)	141	Dardel (Egyptian)	151	Doune (G)	91	Eddy	93	Ermanno Carliotto (I)	428	Finch (U.S.)	503
Cuenta (Col)	139	Dardel (Egyptian)	151	Doune (G)	91	Eddy	93	Ermanno Carliotto (I)	428	Finch (U.S.)	503
Cumberland	46	Dardel (Egyptian)	151	Doune (G)	91	Eddy	93	Ermanno Carliotto (I)	428	Finch (U.S.)	503
Cummings (U.S.)	487	Dardel (Egyptian)	151	Doune (G)	91	Eddy	93	Ermanno Carliotto (I)	428	Finch (U.S.)	503
Cuong (Thai)	442	Dardel (Egyptian)	151	Doune (G)	91	Eddy	93	Ermanno Carliotto (I)	428	Finch (U.S.)	503
Curaco	58	Dardel (Egyptian)	151	Doune (G)	91	Eddy	93	Ermanno Carliotto (I)	428	Finch (U.S.)	503
Curlew	ix	Dardel (Egyptian)	151	Doune (G)	91	Eddy	93	Ermanno Carliotto (I)	428	Finch (U.S.)	503
Curlew (U.S.)	503	Dardel (Egyptian)	151	Doune (G)	91	Eddy	93	Ermanno Carliotto (I)	428	Finch (U.S.)	503
Curstuck (U.S.)	496	Dardel (Egyptian)	151	Doune (G)	91	Eddy	93	Ermanno Carliotto (I)	428	Finch (U.S.)	503
Curstone (I)	273	Dardel (Egyptian)	151	Doune (G)	91	Eddy	93	Ermanno Carliotto (I)	428	Finch (U.S.)	503
Curstis (U.S.)	496	Dardel (Egyptian)	151	Doune (G)	91	Eddy	93	Ermanno Carliotto (I)	428	Finch (U.S.)	503
Cushing (U.S.)	487	Dardel (Egyptian)	151	Doune (G)	91	Eddy	93	Ermanno Carliotto (I)	428	Finch (U.S.)	503
Curtisland (U.S.)	491	Dardel (Egyptian)	151	Doune (G)	91	Eddy	93	Ermanno Carliotto (I)	428	Finch (U.S.)	503
Cuyama (U.S.)	501	Dardel (Egyptian)	151	Doune (G)	91	Eddy	93	Ermanno Carliotto (I)	428	Finch (U.S.)	503
Cyane (U.S.C.G.)	508	Dardel (Egyptian)	151	Doune (G)	91	Eddy	93	Ermanno Carliotto (I)	428	Finch (U.S.)	503
Cyclone (F)	189	Dardel (Egyptian)	151	Doune (G)	91	Eddy	93	Ermanno Carliotto (I)	428	Finch (U.S.)	503
Cydonia (F)	207	Dardel (Egyptian)	151	Doune (G)	91	Eddy	93	Ermanno Carliotto (I)	428	Finch (U.S.)	503
Cyplope	85	Dardel (Egyptian)	151	Doune (G)	91	Eddy	93	Ermanno Carliotto (I)	428	Finch (U.S.)	503
Cypress	81	Dardel (Egyptian)	151	Doune (G)	91	Eddy	93	Ermanno Carliotto (I)	428	Finch (U.S.)	503



GENERAL INDEX—continued.

ILMARINEN (FINNISH)—LE LOING (F)

I—continued		JAG—KAM	PAGE	KAN—KIN	PAGE	KIN—KRO	PAGE	KUB—LAN	PAGE	LAN—LE	PAGE
I.I.M.—JAG	PAGE	Jaguar	60	Kanawha (U.S.)	501	Kingston Cornwall	xiii	Kuban (Rus.)	408	Lansdale II	110
Iimarinen (Finnish)	158	Jaguar (P)	xvii	Kandahar	60	Kingston Galena	xiii	Kubyshev (Rus.)	397	Lansdale (U.S.)	484
Ib	322	Jaguar (G)	222	Kane (U.S.)	488	Kingston Olivine	90	Kullen (Sw)	436	Lansquenet (F)	186
Ibama (Latvian)	341	Jaki (Yugo-Slav)	571	Kanabo	103	Kin	317	Laure (F)	318	Lanzetta (F)	207
Imogen	ix	Jalea (I)	229	Kantan (Thai)	441	Kinugasa (J)	313	Kumano (J)	315	Lanzetta Malocello (I)	270
Impassible (F)	203	Jalisco (Mexican)	347	Kaparan (Sw)	435	Kinugasa (Maru) (J)	335	Kumasa (Rus.)	404	La Palme (F)	188
Imperial	61	Jalisa (Rus)	409	Kapsul (Hun)	407	Kioe (Gr)	240	Kumaziri (J)	407	Lampson (F)	304
Impero (I)	255	Jalota (I)	119	Karabon (Rus)	407	Kiv (U.S.)	60	Kumoz (J)	407	La Plata (A)	119
Implacable	35	Jamnia	47	Kari (J)	325	Kirlaima (J)	304	Kuore (Finnish)	161	La Pomone (F)	190
Impulsive	61	James Ludford	xiii	Karjala (Finnish)	160	Kirkella	90	Kuretaka (J)	324	La Poursuivante (F)	190
Imaduma (F)	323	Jan van Amstel (N)	360	Karkas (Iranian)	246	Kirov (Rus), (Two vessels)	397, 406	Kurt (J)	325	La Reunion (F)	191
Indefatigable	35	Jan van Brakel (N)	360	Karl Pfeifers (G)	226	Kisaragi (J)	323	Kuroki (Rus)	321	La Psyche (F)	193
Independencia (A)	117	Jan van Gelder (N)	360	Karl Liebknecht (Rus)	402	Kiso (J)	318	Kurumb	103	Lapwing (U.S.)	503
Indiana (U.S.)	459	Jan van der Meer (N)	360	Karl Marx (Rus)	49	Kisoo (J)	318	Kurumba	103	La Rallense (U.S.)	501
Indianapolis (U.S.)	477	Jantina (I)	279	Karl Peters (G)	431	Kishikami (J)	318	Kut (Thai)	442	Laramie (F)	301
Indian Summer	93	Janus	279	Karabakrona (Sw)	431	Kite (U.S.)	603	Kvik (Nor)	319	Larch	91
Indomitable	35	Jardine	xiv	Karlshöhe (G)	xxii	Kittiwake	79	Kvintus (Da)	150	Larch (U.S.)	497
Indus	104	Jacramas (Sw)	437	Karukaga (J)	324	Kiwi	111	Kyle	107	Larchol	97
Ingledief	62	Jarvis (U.S.)	485	Kaski Kinabarov (Rus)	411	Kjell (Nor)	325	La Reunion (F)	191	Lark (U.S.)	503
Ingolf (Da)	148	Jason	99	Kassagi (J)	325	Kjok (Nor)	369	La Rioja (A)	118	Larne	60
Ingraham (U.S.)	484	Jasper	99	Kashiir	60	Klas Horn (Sw)	432	Lark	xiv	Lascr Catargiu (Ro)	389
Insel Pool (G)	234	Jastreb (Yugo-Slav)	519	Kashiir (J)	333	Klas Usga (sw)	432	Laska (Rus)	107	Laska (Rus)	109
Intrepid	61	Java (N)	353	Kasinia (J)	359	Klber (F)	182	Lassig (F)	93	Lassig (F)	93
Intrepid (U.S.)	470	Javellin	305	Rastino (J)	305	Klber (F)	182	La Argentina (A)	115	La Sultane (F)	193
Intrepide (F)	186	Jean Bart (F)	170	Kassakia (U.S.)	501	Kliuz (Rus)	409	La Batallense (F)	118	La Surprise (F)	198
Investigator	106	Jean de Venne (F)	182	Kassakia (Rus)	404	Klionayi (Thai)	441	La Bayadere (F)	192	La Sybille (F)	193
Ion C. Bratianu (Ro)	459	Jean Jaaris (Rus)	411	Kasina (J)	359	Klonay (U.S.)	195	La Bayadere (F)	192	La Tendance (F)	371
Iowa (U.S.)	459	Jeanne d'Arc (F)	184	Rastino (J)	305	Klobac (Yugo-Slav)	519	La Belle Poule (F)	207	La Trompeuse (F)	198
Iquitos (P)	374	Jeanette et Genevieve (F)	206	Kastaki (U.S.)	501	Kocatepe (T)	198	La Belle Poule (F)	207	La Trompeuse (F)	198
Irbien (G)	323	Jellicoe	206	Katada (J)	338	Kokek (Man)	345	La Belle Poule (F)	207	La Trompeuse (F)	198
Iride (I)	279	Jenans (U.S.)	453	Katori (J)	330	Kokel (Man)	345	La Belle Poule (F)	207	La Trompeuse (F)	198
Iris (F)	193	Jenkins (U.S.)	23	Katona (J)	330	Kokel (Man)	345	La Belle Poule (F)	207	La Trompeuse (F)	198
Iris (Sw)	340	Jersey	60	Katoru (U.S.)	496	Kohat (U.S.)	220	La Belle Poule (F)	207	La Trompeuse (F)	198
Iron Duke	83	Jervis	60	Katonis (Gr.)	241	Kohat (U.S.)	220	La Belle Poule (F)	207	La Trompeuse (F)	198
Isa Reis (T)	448	João de Lisboa (Port)	381	Katrulki (J)	332	Komet (G)	232	La Belle Poule (F)	207	La Trompeuse (F)	198
Isaac Peral (Sp)	420	Joffre (F)	176	Kawakaga (J)	321	Komertn (Rus)	409	La Belle Poule (F)	207	La Trompeuse (F)	198
Isaac Sweens (N)	354	Johan Maurits van Nassau (N)	xxi	Kawakaga (Rus)	321	Komertn (Rus)	409	La Belle Poule (F)	207	La Trompeuse (F)	198
Isabel (U.S.)	496	John C. Spencer (U.S.)	505	Keary (U.S.)	484	Kommetje	106	La Belle Poule (F)	207	La Trompeuse (F)	198
Isakuyi (J)	333	John D. Edwards (U.S.)	488	Keary (U.S.)	484	Kommuua (Rus)	410	La Belle Poule (F)	207	La Trompeuse (F)	198
Isar (G)	227	Jose Bonifacio (Br)	129	Keary (U.S.)	484	Kommuua (Rus)	410	La Belle Poule (F)	207	La Trompeuse (F)	198
Isel (J)	302	Jose Felix Ribas (Venezuelan)	419	Keary (U.S.)	484	Kommuua (Rus)	410	La Belle Poule (F)	207	La Trompeuse (F)	198
Isis	61	Jose Luis Diaz (Sp)	419	Keary (U.S.)	484	Kommuua (Rus)	410	La Belle Poule (F)	207	La Trompeuse (F)	198
Iskra (Po)	377	Joseph Conrad (U.S.)	509	Keary (U.S.)	484	Kommuua (Rus)	410	La Belle Poule (F)	207	La Trompeuse (F)	198
Iskra (Rus)	404	Joseph Conrad (U.S.)	509	Keary (U.S.)	484	Kommuua (Rus)	410	La Belle Poule (F)	207	La Trompeuse (F)	198
Island (Finnish)	162	Jouett (U.S.)	486	Keary (U.S.)	484	Kommuua (Rus)	410	La Belle Poule (F)	207	La Trompeuse (F)	198
Islands Falk (Da)	149	John G. Gary (A)	118	Keary (U.S.)	484	Kommuua (Rus)	410	La Belle Poule (F)	207	La Trompeuse (F)	198
Isoakca (J)	321	Juan Sebastian de Eleano (Sp)	423	Keary (U.S.)	484	Kommuua (Rus)	410	La Belle Poule (F)	207	La Trompeuse (F)	198
Isonami (J)	323	Juliy (A)	119	Keary (U.S.)	484	Kommuua (Rus)	410	La Belle Poule (F)	207	La Trompeuse (F)	198
Isonzo (I)	290	Jules Verne (F)	203	Keary (U.S.)	484	Kommuua (Rus)	410	La Belle Poule (F)	207	La Trompeuse (F)	198
Istria	90	Juni (Columbia)	139	Keary (U.S.)	484	Kommuua (Rus)	410	La Belle Poule (F)	207	La Trompeuse (F)	198
Istria (I)	291	Juniper	xiii	Keary (U.S.)	484	Kommuua (Rus)	410	La Belle Poule (F)	207	La Trompeuse (F)	198
Iteun (J)	317	Juniper (U.S.) (2 ships)	497, 507	Keary (U.S.)	484	Kommuua (Rus)	410	La Belle Poule (F)	207	La Trompeuse (F)	198
Itachonad (Br)	128	Kharkov (Rus)	400	Keary (U.S.)	484	Kommuua (Rus)	410	La Belle Poule (F)	207	La Trompeuse (F)	198
Itapemir (Br)	128	Kharkov (Rus)	400	Keary (U.S.)	484	Kommuua (Rus)	410	La Belle Poule (F)	207	La Trompeuse (F)	198
Itasca (U.S.C.G.)	505	Kharkov (Rus)	400	Keary (U.S.)	484	Kommuua (Rus)	410	La Belle Poule (F)	207	La Trompeuse (F)	198
Itakusima (J)	331	Kharkov (Rus)	400	Keary (U.S.)	484	Kommuua (Rus)	410	La Belle Poule (F)	207	La Trompeuse (F)	198
Iuka (U.S.)	62	Kharkov (Rus)	400	Keary (U.S.)	484	Kommuua (Rus)	410	La Belle Poule (F)	207	La Trompeuse (F)	198
Ivanhoe	ix	Kharkov (Rus)	400	Keary (U.S.)	484	Kommuua (Rus)	410	La Belle Poule (F)	207	La Trompeuse (F)	198
Iwate (J)	334	Kharkov (Rus)	400	Keary (U.S.)	484	Kommuua (Rus)	410	La Belle Poule (F)	207	La Trompeuse (F)	198





NAS—NON	PAGE	NON—ONO	PAGE	ONT—PAL	PAGE	PAL—PEQ	PAGE	PER—POL	PAGE	POL—PRO	PAGE
<b>N</b> —continued											
Nashville (U.S.)	312	Nassara (Thal)	442	Ontario (U.S.)	503	Pallas (Fr)	193	Perch (Sw)	491	Polaris (Sw)	435
Nali (Fr)	312	Noontide	93	Onwego (U.S.)	490	Palin (U.S.)	497	Percival (U.S.)	483	Polifemo (I)	292
Nator (J)	317	Noor-el-Bahr (Egypt)	151	Otyx	93	Palmalola (I)	284	Perekop (Rus)	400	Pollirabotnik (Rus)	406
Natungoo (J)	321	Nor (Nor)	105	Oplinaré (Fr)	186	Palmer (U.S.)	503	Pergamos (Gr)	240	Pollack (U.S.)	491
Natusina (J)	333	Nordenakjold (Sw)	432	Orangeal	189	Pamlico (U.S.)	507	Perridon	487	Polly (U.S.)	271
Natusina (N)	321	Nordenor (S)	236	Orato (Yugo-Slav)	96	Parapa (A)	121	Perle (Fr)	193	Polly (N)	364
Naugauk (U.S.)	507	Nordkapp (Nor)	232	Oraté (Fr)	519	Pandora	73	Permak (U.S.)	483	Polly Johnson	434
Nautilus (Fr)	193	Nordkaparen (Sw)	433	Orela (Chil)	134	Pandora (P.U.S.C.G.)	508	Permak (U.S.)	483	Polly Johnson	xiv
Nautilus (G)	229	Nordkaparen (Da)	146	Oriental Star	370	Pangani (Thal)	81	Pernando (Br)	xviii	Poltuan	80
Nautilus (U.S.)	491	Nordkapp (Nor)	229	Oriente (U.S.)	503	Panglima	106	Perse (Fr)	488	Pomero (Po)	377
Navajo (U.S.)	502	Norfolk	43	Orion (Fr)	193	Panglaga (I)	228	Perse (I)	272	Pompeo (U.S.)	491
Navarra (Sp)	418	Norge (Nor)	xx	Orion (G)	193	Pantallera (I)	228	Perseus (Sw)	435	Pompano Magno (I)	260
Navasink (U.S.C.G.)	607	Norman	60	Orion (Gr)	242	Pantera (I)	271	Perseus (U.S.)	508	Poncelet (Fr)	192
Nazario Saura (I)	270	Norseman	60	Orion (U.S.)	364	Panther (Gr)	239	Perth	109	Portugal (U.S.)	505
N. B. McLean	110	Northampton (U.S.)	478	Orione (U.S.)	496	Panther (Fr)	188	Perth (Yugo-Slav)	408	Poslet (N)	364
Ndova	106	North Carolina (U.S.)	459	Orione (G)	272	Paolo Emilio (I)	290	Peruv Maya (Rus)	408	Pope (U.S.)	488
Nebuch (Yugo-Slav)	518	North Ranger	197	Orión (Yugoslav)	517	Paon (Fr)	207	Pesker (Rus)	404	Poplar (U.S.)	497
Necches (U.S.)	501	Northern Rover	xiii	Orjonikidze (Rus)	397	Papacolis (Br)	241	Peterel	82	Porpoise (U.S.)	491
Neghelli (I)	279	Northland (U.S.)	506	Orkan (G)	230	Paraguassé (Gr)	128	Pétrel	204	Porter (U.S.)	480
Nelson	508	Nothing (G)	243	Orlov (Rus)	136	Paraguayana	371	Pétrel (Fr)	95	Portia	107
Nemaha (U.S.)	322	Nothing (G)	243	Orn (Nor)	369	Paralyba (Br)	126	Petra	95	Portland (U.S.)	477
Nembo (I)	270	Novas de Abreu (Br)	129	Ornen (Da)	145	Paralos (Gr)	242	Petrobros	401	Porto Buso (I)	292
Nemesis (U.S.C.G.)	308	Novake (J)	321	Ornen (Sw)	437	Parana (A)	407	Petrovsk (Rus)	400	Porto Conte (I)	292
Nenoh (I)	279	Nozinna (J)	340	Orzol (Chil)	183	Parana (Rus)	407	Petrovski (U.S.)	401	Porto Corsini (I)	284
Nescho (U.S.)	500	Orzelle (J)	61	Orphe (Fr)	193	Pararinas (P)	374	Peyk (T)	153	Porto Fimipedole (I)	292
Neptune	52	Orzak (U.S.)	324	Orpheus	xi	Paris (Fr)	173	Piel (G)	233	Porto Erocle (I)	292
Neptuno (Sp.)	421	Nuoli (Fin)	102	Orsa (I)	272	Pariskaya-Kommuna (Rus)	129	Pharos (Egypt)	131	Porto Ferrao (I)	292
Neride (I)	270	Nürnberg (G)	218	Orslan (U.S.)	503	Parisko (A)	120	Phelps (U.S.)	486	Porto Foschino (I)	292
Nerone (I)	292	Nyaret (T)	148	Oruc Reis (T)	446	Parnahya (Br)	128	Phenix (Fr)	92	Porto Pissani (I)	292
Nereus (Gr)	241	Orzel (Poland)	493	Oscar II (Sw)	430	Pararmatta	191	Phenix (Fr)	481	Porto Queto (I)	292
Nereus (U.S.)	499	Oscar II (Sw)	430	Otto Schmidt (Rus)	411	Parrot (U.S.)	485	Philot	97	Porto Recanati (I)	292
Nerissa	60	Oslo (J)	321	Otto Schmidt (Rus)	411	Partenope (I)	271	Phloebe	47	Porto Salvo (I)	292
Nesosa (Fr)	207	Osira	74	Oslo (J)	321	Partin	73	Phoenix	x1	Porto Sdobb (I)	292
Nestor	60	Osmond Ingram (U.S.)	503	Ostia (I)	270	Partridge (U.S.)	503	Phoenix (U.S.)	481	Porto Torres (I)	292
Nestor (Gr)	242	Ostrop (U.S.)	497	Ostria	74	Pasaden (U.S.)	497	Phoque (Fr)	129	Porto Vanere (I)	292
Nettelbeck (G)	228	Osupee (U.S.)	506	Ostrop (U.S.)	497	Pasadena (Colombian)	139	Phra Ruang (Thal)	440	Porto Vares (Br)	129
Nettino (I)	289	Osoaviakhiun (Rus)	406	Oswaldian	xv	Pascel (Fr)	192	Phray (Br)	126	Potomac (U.S.)	496
Nevada (U.S.)	466	Ostia (I)	270	Oswaldian	xv	Pascen II (Fr)	203	Phuathina (U.S.)	491	Potomac (U.S.)	496
Newark	69	Ostro (I)	270	Oswaldian	xv	Pasteur (Fr)	192	Phuathina (Colombian)	139	Potomac (U.S.)	496
New Jersey (U.S.)	459	Osvetnik (Yugo-Slav)	518	Oswaldian	xv	Pathan	xv	Pickerel (U.S.)	491	Potomac (U.S.)	496
New Mexico (U.S.)	463	Oswald	xi	Oswaldian	xv	Patka (U.S.)	xi	Piet	491	Poulin (Fr)	xviii
New Orleans (U.S.)	475	Oswaldian	xi	Oswaldian	xv	Patka (U.S.)	xi	Piet Capped (I)	281	Prarie (U.S.)	496
Newport	69	Oswaldian	xi	Oswaldian	xv	Patria (Cu)	141	Piet Hein (N)	354	Pravda (Rus)	404
New York (U.S.)	468	Oswaldian	xi	Oswaldian	xv	Patricia (Sw)	437	Pietr de Bitter (N)	360	Prehle (U.S.)	489
Newcastle	49	Oswaldian	xi	Oswaldian	xv	Patron (Rus)	409	Pietr Florisz (N)	331	President Theodore Tisler (Fr)	204
Neyron (Iranian)	246	Oswaldian	xi	Oswaldian	xv	Patterson (U.S.)	483	Pietr Micca (I)	275	Presidente Alfaro (Benadorian)	113
Nezamojnki (Rus)	246	Oswaldian	xi	Oswaldian	xv	Patterson (Rus)	483	Pigeon (Fr)	207	Presidente Mosquera (Col)	139
Niblung (G)	243	Oswaldian	xi	Oswaldian	xv	Otori (J)	325	Pigeon (U.S.)	297	Presidente Sarmiento (A)	120
Niblack (U.S.)	484	Oswaldian	xi	Oswaldian	xv	Otra (Nor)	340	Pigeon (Fr)	207	Presidente Sarmiento (A)	120
Nicholson (U.S.)	484	Oswaldian	xi	Oswaldian	xv	Otra (Nor)	340	Pigeon (U.S.)	297	Preston (U.S.)	487
Nicola Fabrizi (I)	274	Oswaldian	xi	Oswaldian	xv	Ottawa	260	Pikasa (Rus)	404	Preston (U.S.)	487
Nicolas Bravo (Mexican)	347	Oswaldian	xi	Oswaldian	xv	Ottawa	260	Pikasa (Rus)	404	Preston (U.S.)	487
Nicolaso da Reco (I)	270	Oswaldian	xi	Oswaldian	xv	Ottawa	260	Pikasa (Rus)	404	Preston (U.S.)	487
Nicola Zeno (I)	270	Oswaldian	xi	Oswaldian	xv	Ottawa	260	Pikasa (Rus)	404	Preston (U.S.)	487
Niels Iuel (Da)	144	Oswaldian	xi	Oswaldian	xv	Ottawa	260	Pikasa (Rus)	404	Preston (U.S.)	487
Nierson (Rus)	409	Oswaldian	xi	Oswaldian	xv	Ottawa	260	Pikasa (Rus)	404	Preston (U.S.)	487
Niger	30	Oswaldian	xi	Oswaldian	xv	Ottawa	260	Pikasa (Rus)	404	Preston (U.S.)	487
Nigeria	47	Oswaldian	xi	Oswaldian	xv	Ottawa	260	Pikasa (Rus)	404	Preston (U.S.)	487
Nightingale	94	Oswaldian	xi	Oswaldian	xv	Ottawa	260	Pikasa (Rus)	404	Preston (U.S.)	487
Nike (U.S.C.G.)	508	Oswaldian	xi	Oswaldian	xv	Ottawa	260	Pikasa (Rus)	404	Preston (U.S.)	487
Niki (Gr)	241	Oswaldian	xi	Oswaldian	xv	Ottawa	260	Pikasa (Rus)	404	Preston (U.S.)	487
Ning Hai (J)	138	Oswaldian	xi	Oswaldian	xv	Ottawa	260	Pikasa (Rus)	404	Preston (U.S.)	487
Niohe (I)	289	Oswaldian	xi	Oswaldian	xv	Ottawa	260	Pikasa (Rus)	404	Preston (U.S.)	487
Niord (Sw)	436	Oswaldian	xi	Oswaldian	xv	Ottawa	260	Pikasa (Rus)	404	Preston (U.S.)	487
Ninagan	188	Oswaldian	xi	Oswaldian	xv	Ottawa	260	Pikasa (Rus)	404	Preston (U.S.)	487
Nirga (J)	301	Oswaldian	xi	Oswaldian	xv	Ottawa	260	Pikasa (Rus)	404	Preston (U.S.)	487
Nitro (U.S.)	500	Oswaldian	xi	Oswaldian	xv	Ottawa	260	Pikasa (Rus)	404	Preston (U.S.)	487
Nivose (Fr)	205	Oswaldian	xi	Oswaldian	xv	Ottawa	260	Pikasa (Rus)	404	Preston (U.S.)	487
Nivos (G)	230	Oswaldian	xi	Oswaldian	xv	Ottawa	260	Pikasa (Rus)	404	Preston (U.S.)	487
Nizam	60	Oswaldian	xi	Oswaldian	xv	Ottawa	260	Pikasa (Rus)	404	Preston (U.S.)	487
Noa (U.S.)	488	Oswaldian	xi	Oswaldian	xv	Ottawa	260	Pikasa (Rus)	404	Preston (U.S.)	487
Noble	80	Oswaldian	xi	Oswaldian	xv	Ottawa	260	Pikasa (Rus)	404	Preston (U.S.)	487
Nokaze (J)	924	Oswaldian	xi	Oswaldian	xv	Ottawa	260	Pikasa (Rus)	404	Preston (U.S.)	487
Nomparell	60	Oswaldian	xi	Oswaldian	xv	Ottawa	260	Pikasa (Rus)	404	Preston (U.S.)	487





## VALDORA-ZULU

## V—continued.

VAL—VER	PAGE
Valdora	xlii
Vale (Nor)	370
Valen (Sw)	434
Valentine	xi
Valerian Kubyshev (Rus)	411
Valeureux (F)	207
Valiant	31
Valk (N)	303
Vallentuna (I)	288
Valmy (F)	187
Valtorso (I)	284
Valorous	68
Valrossen (Sw)	434
Vampire	102
Vandyck	xv
Vaneva	67
Val Gaen (N)	xxi
Van Ghent (N)	354
Vanguardia (Uruguayan)	511
Vandy	67
Van Kinsbergen (N)	357
Van Meerlant (N)	359
Van Nes (N)	354
Vancoc	67
Vanquisher	67
Vansittart	65
Var (F)	205
Vara (U.S.)	496
Vardar (Yugo-Slav)	322
Varennes	110
Varonis (Latvian)	342
Vasama	90
Vasilvse Georgios I (Gr)	238
Vasilissa Olga (Gr)	238
Vauban (F)	187
Vauquelin (F)	187
Vauquels (F)	199
Vautour (F)	187
Vedetta (I)	288
Vega	68
Vega (I)	272
Vega (Sw)	435
Vega (U.S.)	401
Veinte de Mayo (Cu)	141
Veinte y Cuatro de Febrero (Cu)	141
Velasco (Sp)	116
420	420
Velebit (Yugo-Slav)	517
Vellala (I)	279
Velox	67
Velta (Rus)	407
Vendetta	102
Vendicta	67
Vengeur (F)	192
Veniero (I)	277
Venonoms	65
Venture	109
Vénus (F)	193
Veracruz (Mexican)	347
Verbano (I)	291
Verehres	119
Verde (I)	291

VER—VOL	PAGE
Verdun	67
Verdun (F)	187
Verity	65
Vernon	94
Versaille	67
Veshishi (Finnish)	159
Vesikko (Finnish)	159
Vesper	67
Vespa (I)	435
Vestal (U.S.)	300
Vetchinen (Finnish)	159
Veteran	65
Vladimir Molotov (Rus)	411
Viceroy	67
Victoria and Albert	97
Victorian	90
Victorious	35
Vidal Gormaz (Chili)	136
Vidar (Nor)	370
Vidar (Sw)	433
Viedla (Chil)	134
Vidette	67
Viera (Rus)	490
Viestl (I)	282
Viestras (Latvian)	341
Vigilant (U.S.)	508
Vigilante (F)	202
Vigliante (I)	283
Vigrosso (I)	292
Vikhr (Rus)	403
Viking	111
Vila (Yugo-Slav)	529
Villas (Cu)	141
Ville d'Ys (F)	197
Vilppula (Finnish)	161
Vilium (Thai)	440
Vimera	68
Vimy	67
Vincennes (U.S.)	475
Vincenzo Gioberti (I)	268
Vincenzo Orsini (I)	274
Vindictive	83
Vinha (Finnish)	162
Vipsanio Agrippa (I)	269
Vireo (U.S.)	503
Virsaitis (Latvian)	341
Viscol	97
Vital de Oliveira (Br)	96
Vittor Pisani (I)	281
Vittorio Alfieri (I)	268
Vittorio Veneto (I)	285
Vivacious	67
Vivien	68
Viyuga (Rus)	403
Vladimir Ruseznoff (Rus)	412
Vodolci I (Rus)	413
Vodolci II (Rus)	413
Volkov (Rus)	402
Volma (Finnish)	162
Volker (G)	232
Volochevka (Rus)	400
Volodarski (Rus)	402
Volta (F)	184
Volturno (I)	290

VOL—WAS	PAGE
Volunteer	65
Von der Gröben (G)	228
Voroshilov (Rus)	397
Vorovsky (Rus)	408
Vorzen	67
Vouga (Port)	379
Voyager	102
Vulcan	90
Vulca (U.S.)	500
Vulcano (Port)	383
Vulcano (Sp)	421
Vzryl (Rus)	407

## W

Wachtmeister (Sw)	PAGE
433	433
Wahoo (U.S.)	490
Wainwright (U.S.)	484
Wakaba (J)	322
Wakakura	111
Wakatake (J)	324
Wakufu	xi
Waldemar Kophamel (G)	226
Wale (Sw)	433
Waikē (U.S.)	484
Walker	66
Wallaco	68
Walker (U.S.)	483
Walnut	90
Walnut (U.S.)	497, 505
Walpole	66
Wandank (U.S.)	502
Wanderer	65
War Afridi	96
War Bahadur	96
War Bharata	96
War Brahmā	96
War Diwan	96
War Hindoo	96
War Krishna	96
War Mehtar	96
War Nawab	96
War Nizam	96
War Pathan	96
War Sindari	96
War Pindari	96
War Suda	96
Warbler (U.S.)	503
Ward (U.S.)	489
Warnow (G)	227
Warrawungu	102
Warrego	101
Warrington (U.S.)	486
Warrior II	xv
Warseite	31
Warwick	66
Warwickshire	xiv
Was (Sw)	436
Washington	xiii

WAS—WIN	PAGE
Washington (U.S.)	459
Wasnuth (U.S.)	488
Waap (U.S.)	470
Watchman	66
Waterien	102
Waters (U.S.)	489
Watson (U.S.)	483
Waverley	xvi
Wega (N)	363
Weichsel (G)	227
Wei Ning (C)	138
Wei Sheng (C)	138
Weld	90
Welles (U.S.)	69
Wellington	78, 111
Wells	69
Welsman	59
Weiser (G)	232
Wessex	xi
Westalia	xlii
Westerauld (G)	234
West Diep (Belgian)	122
West Virginia (U.S.)	460
Westcott	66
Westminster	68
Weston	78
Whaddon	60
Whale (U.S.)	490
Wharton (U.S.)	502
Whipple (U.S.)	488
Whippoorwill (U.S.)	503
Whirlpool	93
Whirlwind	xi
Whiteall	68
Whitehall	90
Whitely	xi
Whitney (U.S.)	498
Whithead	65
Wiener (Po)	xix
Wichita (U.S.)	474
Widgen	79
Widgeon (U.S.)	503
Widnes	81
Wielingen (Belgian)	122
Wild Swan	65
Wilhelm Bauer (G)	226
Wilhelm Heidkamp (G)	xxii
Willa (Po)	377
Willk (Po)	376
Wilkes (U.S.)	484
Willebrord Snellius (N)	361
Willeom van der Zaan (N)	359
William J. Stewart	xi
Williet (U.S.)	503
William B. Preston (U.S.)	497
William Hallett	xiii
William J. Stewart	110
William J. Duane (U.S.)	505
William Ward Burroughs (U.S.)	501
Williamson (U.S.)	497
Willow	91
Wilson (U.S.)	485
Winchelsea	66
Winstler	68
Windsor	68

WIN—YAW	PAGE
Winnifmet (U.S.)	507
Winslow (U.S.)	486
Wisconsin (U.S.)	459
Wishart	66
Wistaria	90
Witch	66
Witherington	65
Witte de With (N)	354
Wivern	65
Wolf (G)	65
Wolfgang Zenker (G)	xxiii
Wolfhound	66
Wollin (G)	234
Wolsey	68
Woodbury (U.S.C.G.)	508
Woodcock (U.S.)	503
Woodworth (U.S.)	483
Wooley (U.S.)	484
Woolston	68
Woolwich	87
Worcester	65
Worden (U.S.)	487
Wotan (G)	232
Wrangel (Sw.)	433
Wron	xi
Wrestler	68
Wright (U.S.)	496
Wrynepc	68
Wu Ning (C)	138
Wyoming (U.S.)	494

## X

Xauen (Sp)	422
------------	-----

## Y

Yaeyama (J)	330
Yagasa (Maru) (J)	335
Yakaze (J)	324
Yakobinetz (R)	404
Yakori (Rus)	409
Yakov (Rus)	402
Yakumo (J)	334
Yamagumo (J)	321
Yamakaze (J)	321
Yamasiro (J)	303
Yang Min (Manchukuo)	344
Yara (Cu)	141
Yarra	101
Yat Sen (J)	138
Yausa (Rus)	408
Yavuz (Turkey)	444

## Z

Zafer (T)	445
Zaffro (I)	279
Zagreb (Yugoslav)	516
Zähringen (G)	292
Zaire (Port)	382
Zano (U.S.)	488
Zapal (Rus)	407
Zaplan (Uruguayan)	511
Zara (I)	258
Zaruzna (Rus)	403
Zavietni (Rus)	403
Zbik (Po)	376
Zehro (I)	xxiv
Zellin (U.S.)	502
Zellis (F)	207
Zelée (F)	207
Zhiesnianskov (Rus)	403
Zhiesnoroshnik (Rus)	410
Zhivuchi (Rus)	403
Zingel (J)	339
Zinnia (Belgian)	122
Zintu (J)	316
Zmal (Yugo-Slav)	519
Zmeya (Rus)	409
Znamya Sozialisma (Rus)	410
Znea (I)	277
Zorki (Rus)	403
Zuiderkruis (N)	362
Zuikaku (J)	301
Zulu	61

## GENERAL INDEX—continued.